

E 1,176,000

N 1,664,000

N 1,664,000

E 1,174,000

N 1,700,000

E 1,174,000

21

MATCH TO SHEET 2

E 1,178,000



RED #8 W/ LIGHT
EBB
16 MARCH 2020

GREEN #7 W/ LIGHT
EBB
16 MARCH 2020

E 1,176,000

N 1,720,000

PROJECT SPECIFIC NOTES:
 -THE INFORMATION DEPICTED ON THIS MAP REPRESENTS THE RESULTS OF SURVEYS MADE ON THE DATES INDICATED AND CAN ONLY BE CONSIDERED AS THE GENERAL CONDITIONS EXISTING AT THAT TIME.
 -THE SOUNDING DATA DEPICTED ON THIS MAP WAS COLLECTED USING PROJECT CLASSIFICATION SORT AS SPECIFIED IN EM 1110-2-1003.
 -COORDINATES REFER TO US STATE PLANE COORDINATE SYSTEM NAD 83, LONG ISLAND LAMBERT ZONE 110. SURVEY FEET.
 -SOUNDINGS ON THIS MAP REFER TO THE PLANE OF MEAN LOWER LOW WATER (MLLW) EPOCH 1989-2001.
 -MEAN LOWER LOW WATER IS 1.8 - 2.5 FEET BELOW NAVD83 AS DETERMINED USING VDATUM 1VE02 5.21.
 -SOUNDINGS DEPICTED ON THIS MAP HAVE BEEN SORTED TO A 2.0 FOOT INTERVAL USING THE FULL DATA SET.
 -CONTOURS ON THIS MAP WERE GENERATED USING THE MAP DATA SET. THE DATA DEPICTED ON THIS MAP SHOULD NOT BE USED FOR VOLUME CALCULATION PURPOSES.
 -AERIAL IMAGERY PROVIDED BY USACE NY SURVEY SECTION (MARCH 2020) AND MEET EM 1110-2-1000 ACCURACY STANDARDS.
 -THE PRISMATIC DATA DEPICTED ON THIS MAP ARE FOR ORIENTATION PURPOSES ONLY.
 -THIS SURVEY WAS PERFORMED USING REAL TIME KINEMATIC GPS FROM STATION WAR-6.
 -THIS MAP IS CEIP COMPLIANT IN ACCORDANCE WITH ER 1110-2-8160 AND EM 1110-2-6056.

LOCAL CONTROL DATA	
BENCHMARK: WAR 6	ELEVATION: 2.54'
NSRS BENCHMARK	
BENCHMARK: R 375 PID: KU0724	ELEVATION: 8.88'

E 1,180,000

N 1,664,000

E 1,180,000

N 1,664,000

N 1,700,000

GREEN CAN #9
EBB
19 MARCH 2020

SHOAL AREA

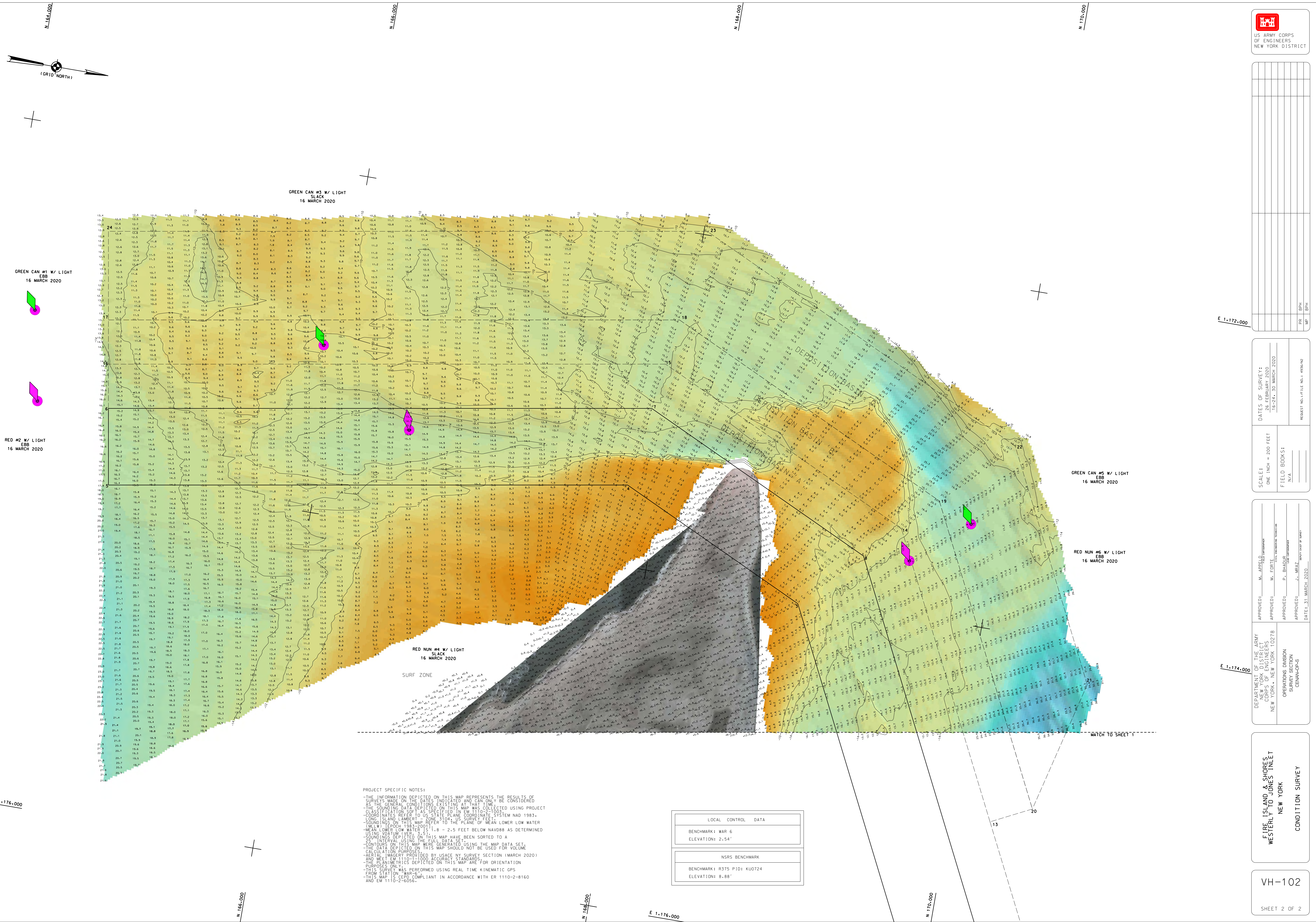
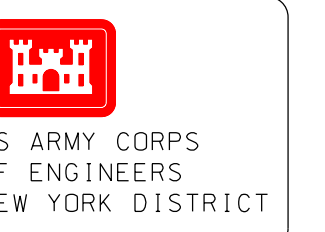
E 1,178,000

N 1,720,000

DEPARTMENT OF THE ARMY CORPS OF ENGINEERS NEW YORK, NEW YORK 10278	APPROVED: M. APPELO M. LORIE	THIS MAP WAS REVISIONED BY: P. BRADY	DATE: 21 MARCH 2020
OPERATIONS DIVISION SECTION: SURVEY GENN-OPS	APPROVED: J. MBAY	OPERATION NUMBER: 16-254-30	REVISION NUMBER: 1

FIRE ISLAND & SHORES
WESTERLY TO JONES INLET
NEW YORK
CONDITION SURVEY

VH-101
SHEET 1 OF 2



PROJECT SPECIFIC NOTES:
-THE INFORMATION DEPICTED ON THIS MAP REPRESENTS THE RESULTS OF SURVEYS MADE ON THE DATES INDICATED AND CAN ONLY BE CONSIDERED AS THE GENERAL CONDITIONS EXISTING AT THAT TIME.
-THE SOUNDING DATA DEPICTED ON THIS MAP WAS COLLECTED USING PROJECT COORDINATES REFER TO US STATE PLANE COORDINATE SYSTEM NAD 1983.
-SOUNDINGS ON THIS MAP REFER TO THE PLANE OF MEAN LOWER LOW WATER
-MEAN LOWER LOW WATER IS 1.8 - 2.5 FEET BELOW NAVD88 AS DETERMINED USING THE TIDE GAUGE AT WESTERLY.
-SOUNDINGS DEPICTED ON THIS MAP HAVE BEEN SORTED TO A 10 SECOND INTERVAL USING THE SOUNDING DATA SET.
-CONTOURS ON THIS MAP WERE GENERATED USING THE MAP DATA SET.
-THE DATA DEPICTED ON THIS MAP SHOULD NOT BE USED FOR VOLUME CALCULATION PURPOSES.
-THIS SURVEY WAS PERFORMED BY USACE NY SURVEY SECTION (MARCH 2020) AND MEETS EM 1110-2-1000 ACCURACY STANDARDS.
-THE PLANNED PROJECTS DEPICTED ON THIS MAP ARE FOR ORIENTATION PURPOSES ONLY.
-THE SURVEY WAS PERFORMED USING REAL TIME KINEMATIC GPS.
-THE SURVEY WAS PERFORMED IN ACCORDANCE WITH EM 1110-2-8160 AND EM 1110-2-6056.

Table with 2 columns: LOCAL CONTROL DATA, NSRS BENCHMARK. Includes benchmark details like BENCHMARK: WAR 6, ELEVATION: 2.54' and BENCHMARK: R375 PID: KU0724, ELEVATION: 8.88'.

Table with columns: DATE OF SURVEY, SCALE, FIELD BOOKS, REVISIONS. Includes survey dates (26 FEBRUARY 2020, 16-24-30 MARCH 2020) and revision numbers (1-10).

Table with columns: APPROVED, DATE. Includes approval signatures and dates for M. JORJE, P. BRADY, J. MBAY.

Table with columns: DEPARTMENT OF THE ARMY, CORPS OF ENGINEERS, OPERATIONS DIVISION, SUBOPERATION CEMETARIES. Includes organizational details and project title: FIRE ISLAND & SHORES WESTERLY TO JONES INLET NEW YORK CONDITION SURVEY.